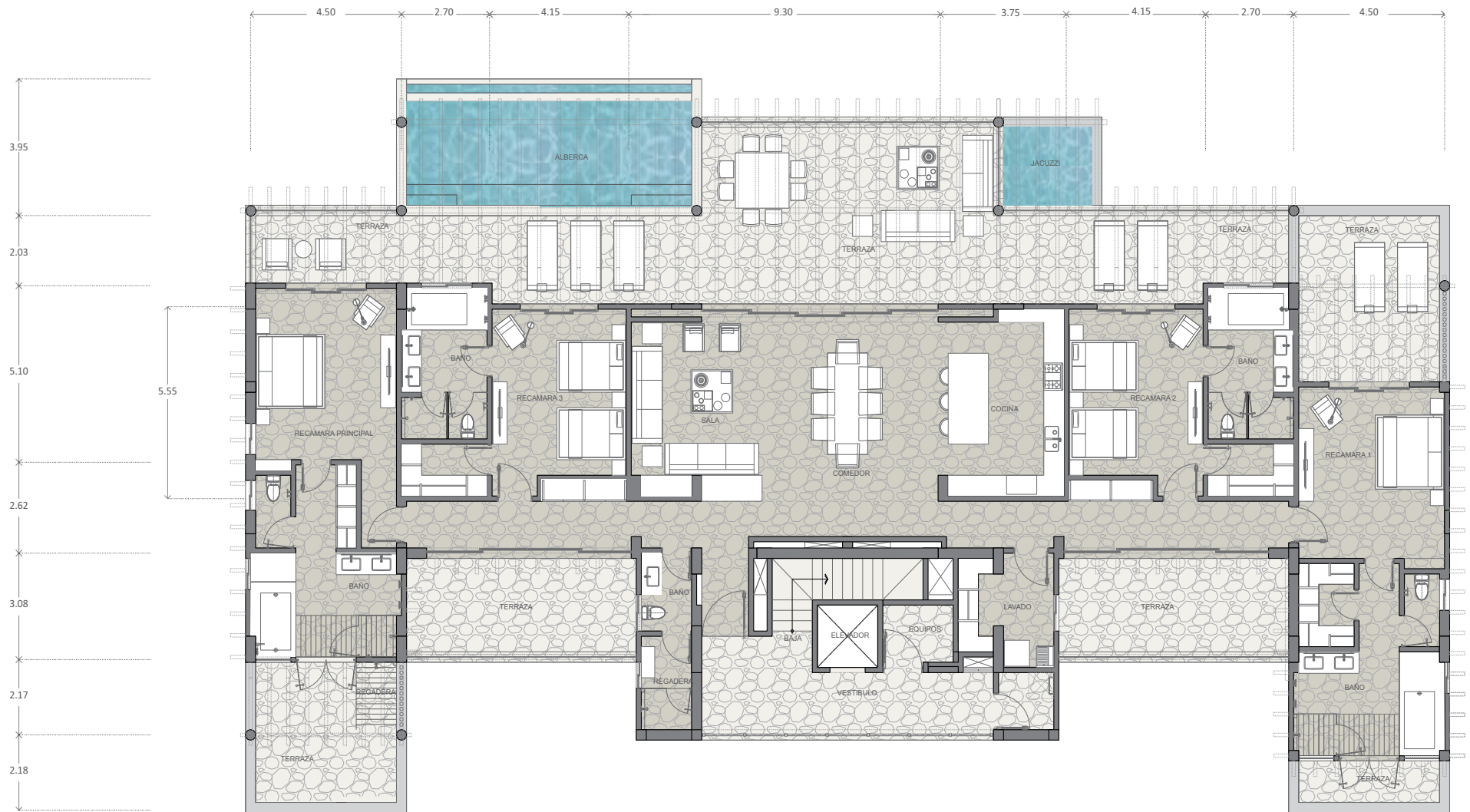


BUILDING 1 PENTHOUSE



BEDROOMS: 4
BATHROOMS: 4.5
POOL DETAILS: PLUNGE POOL & 2 JACUZZIS
INTERIOR AREA: 3,476.74 sq. ft. / 323 m2
EXTERIOR AREA: 2,174.31 sq. ft. / 202 m2
POOL: 398.26 sq. ft. / 37 m2
TOTAL AREA: 6,049.32 sq.ft / 562 m2

Preliminary project subject to change without notice, images are merely informative, therefore they do not represent any manifestation whatsoever of how project will be or will be finished, as it is merely a project and, in any case, it only corresponds to the project's first phase.